



SIMCHART® QUICK GUIDES

Accessing Grades and Instructor Feedback

Rev. 6/13 | Student Version 13.1

WE'RE READY TO HELP!

For customer support, please visit our online technical support center at evolvesupport.elsevier.com to access self-service options or chat with a live representative, or call us at **1-800-222-9570**.

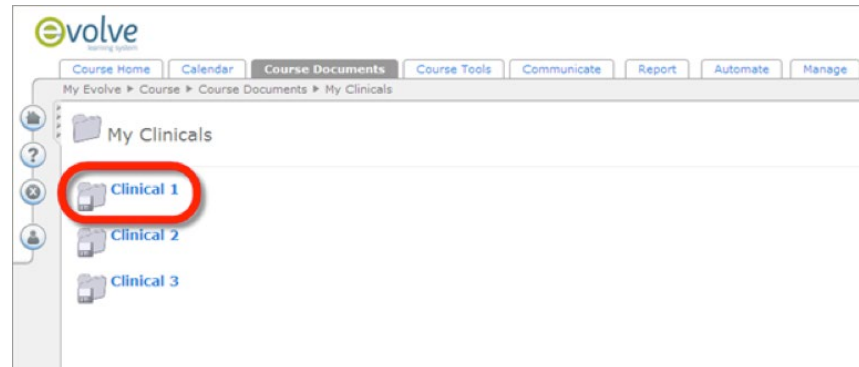
Real-world experience in electronic documentation

To Review Graded Submitted Assignments

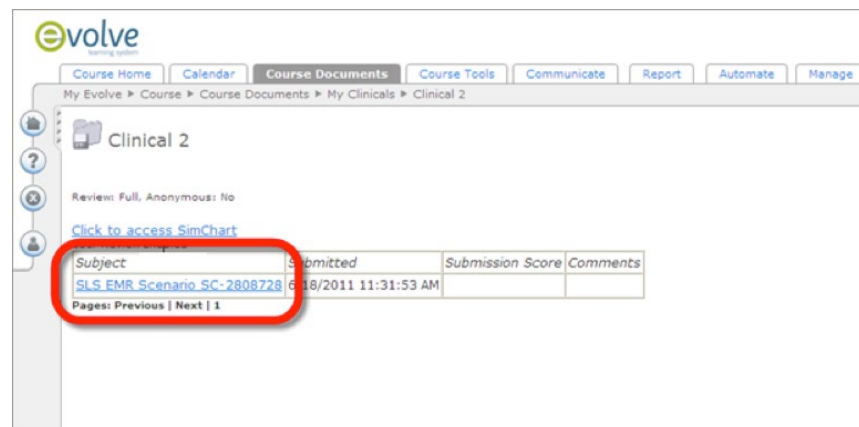


There are two ways to access your graded assignments. The first way is to go into the actual assignment.

- » After entering your course, click the item you wish to review.



- » Click on the link for submission under the Subject section.





» Click the link of the submitted file to access the PDF document.

The screenshot displays the Evolve Learning System interface. At the top, the 'evolve' logo is visible. Below it, a navigation bar includes tabs for 'Course Home', 'Calendar', 'Course Documents', 'Course Tools', 'Communicate', 'Report', 'Automate', and 'Manage'. The breadcrumb trail reads 'My Evolve > Course > Course Documents > My Clinicals > Clinical 2'. The main content area shows 'Clinical 2' with a folder icon. Below this, there is a section for 'SLS EMR Scenario SC-2808728' submitted by 'User, Evolve (evolveuser1)' on '6/18/2011 11:31:53 AM'. A link 'Click to view this student's EHR' is present. Underneath, a 'Submitted Files' section contains a file named '1378377.pdf (117751) bytes', which is highlighted with a red oval. A 'Done' button is located at the bottom left of the interface.



1

2

3

4

Here is the second way you can access your graded assignments.

- » Access your Course Documents.
- » Click the Graded Assignments folder.
- » Select the Click to access SimChart Graded Assignments link.

 Course Documents

 My Clinicals

 Case Studies

 Simulations

 Graded Assignments

Your graded assignments will be sorted by the assignment type: My Clinicals, Case Studies, and Simulations. Expand each section to see the list of your graded assignments.

SimChart® Logout

Graded Assignments [Expand All](#) [Collapse All](#)

My Clinicals ▶

Case Studies ▼

Title	Instructor	Submitted
Test Case Study	Copeland, Susan	04/22/2013

Showing 1 to 1 of 1 entries [First](#) [Previous 1](#) [Next](#) [Last](#)

Simulations ▶

» Click on the title of the assignment to access the PDF document.

To Review Feedback on In-Progress Assignments

Once you've begun an assignment, your instructor can provide feedback. They can either comment within the SimChart EHR or they can generate a Work-In-Progress Report.

To review comments that your instructor provides within your SimChart EHR, simply access the assignment.

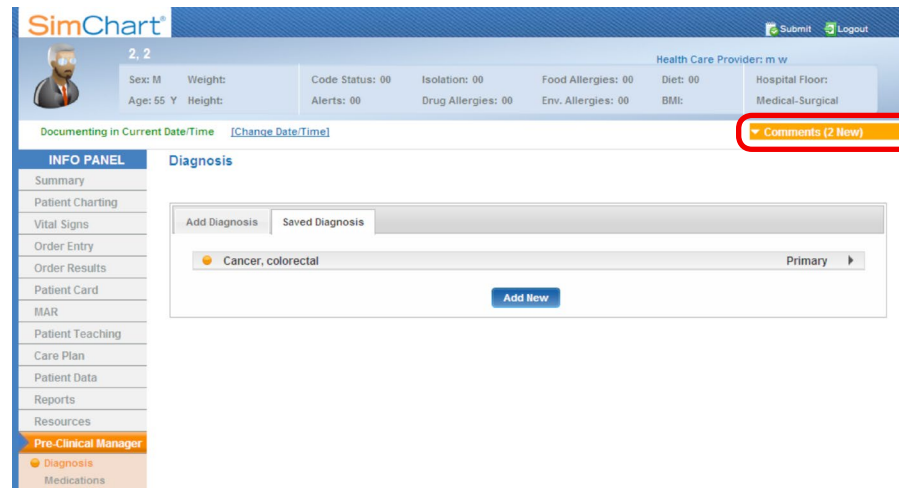


From within your SimChart Course Documents, select the assignment type folder, eg the My Clinicals folder for clinical assignments.

- » Select an assignment.
- » Select the Click to access SimChart link.

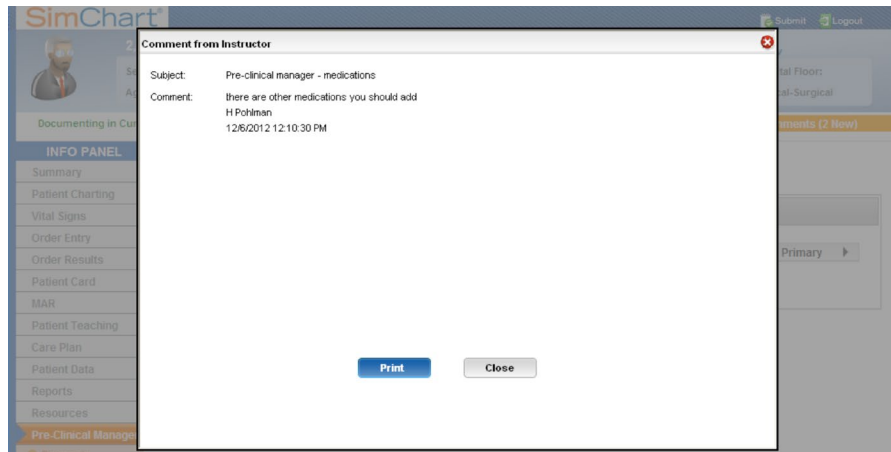
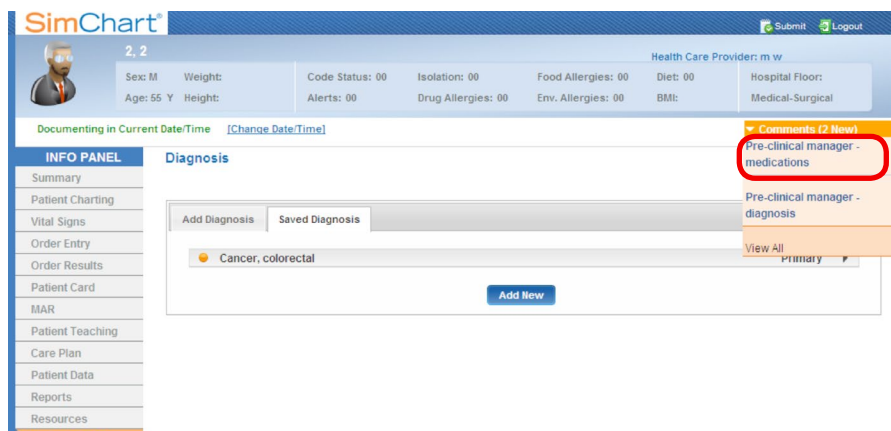


If your instructor has added comments, you'll notice a link to comments displayed in the top bar below the patient header. The number of new comments will be displayed in the drop down title.





To view comments, simply select the drop down list and choose the comment you wish to review.

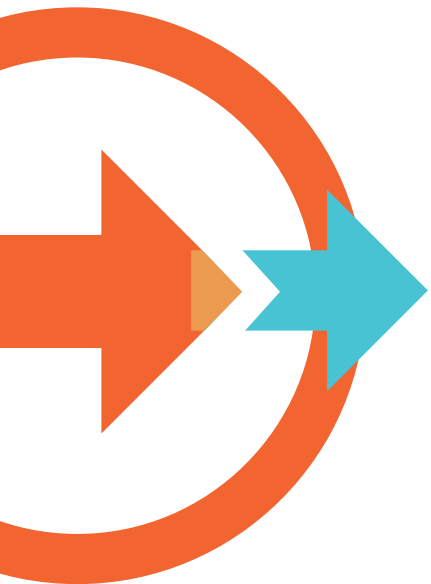


Here you have the option to Print Comments or Close the overlay.



Instructors may also generate a Work-In-Progress Report, which can be emailed to you.





We're ready to help! For customer support, please visit our online technical support center at evolvesupport.elsevier.com to access self-service options or chat with a live representative, or call us at **1-800-222-9570**.

